

SAFETY KNIFE SECUNORM PROFI25 MDP

ORDER NOW!

Order No.	120700.02
Knife size (L x W x H)	143 x 17 x 31 mm
Weight knife	84.5 g
Basic material	Aluminium



METAL
DETECTABLE

21 mm cutting depth
for all common cutting
materials

Automatic blade retraction
for a high user protection

Metal detectable plastic
for optimal detection

Robust ergonomic handle
for the toughest challenges

Smooth-running slider
for right and left handers

**2-cutting edge
stainless steel blade**
for a double period of use

**Abrasion resistant, uncoated
aluminium**
to protect against contamination
through paint slivers (flakes)



THE SAFER WAY TO CUT.

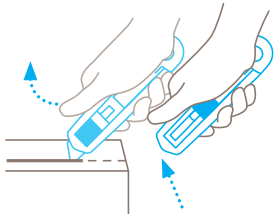
martor

MARTOR SAFETY KNIFE SECUNORM PROFI25 MDP

SAFETY TECHNOLOGY



SECUNORM
= high safety



Automatic blade retraction

The automatic blade retraction of the SECUNORM PROFI25 MDP guarantees a high degree of safety from cut injuries. As soon as you have started to cut, take your thumb off the slider. Then the blade will retract into the handle immediately after leaving the material being cut.









TECHNICAL FEATURES

 Metal detectable	 X-ray detectable	 Tool-less blade change	 Very abrasion resistant
 Very ergonomic	 2-cutting edge blade	 Cutting depth	 For right and left handers
 Stainless			

EXAMPLES OF USE



MAIN CUTTING MATERIALS

 Cardboard: up to 3-ply	 Wrapping, stretch and shrink foil	 Plastic strapping band	 Tape
 Bagged goods	 Layers of foil or paper	 Yarn, cord	 PVC

MOUNTABLE BLADES



TRAPEZOID BLADE NO. 199

0.63 mm, deep-edged, stainless,
10 in dispenser

NO. 199.70

PACKING INFORMATION

Packaging unit	1 in single unit box (10 knives in multipack)
Size single unit box	144 x 22 x 38 mm
Weight single unit box	99.3 g
EAN Code single unit box	4002632920431
Size outer pack	115 x 80 x 160 mm
Weight outer pack	1037.2 g
EAN Code outer pack	4002632971754