

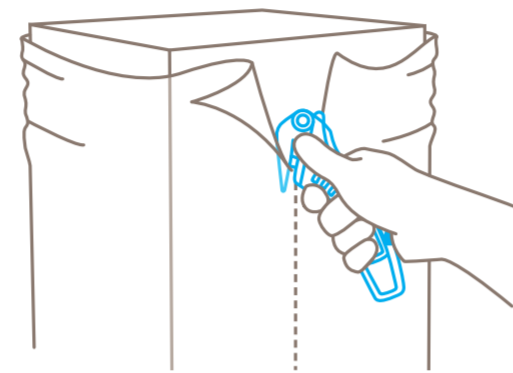
SAFETY POSTER INSTRUCTIONS FOR THE SAFE HANDLING OF YOUR CUTTING TOOL

martor

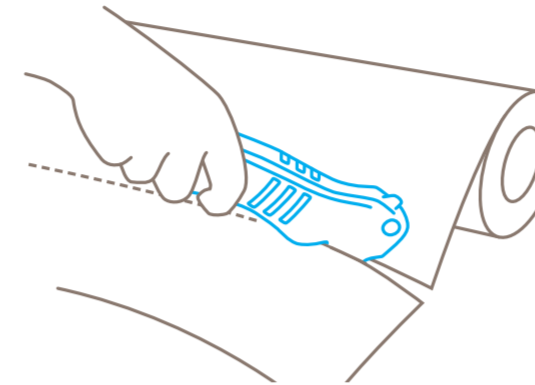
SECUMAX 320



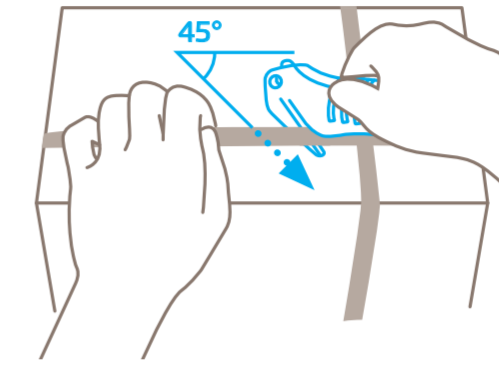
USAGE



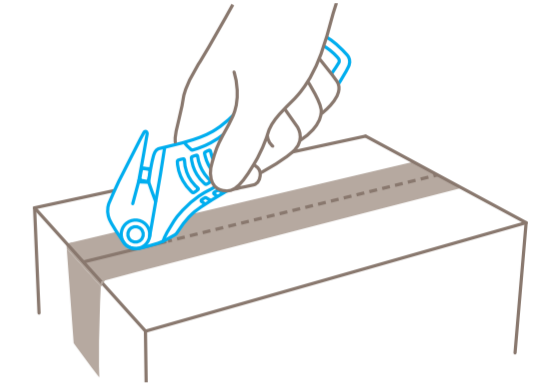
Use the pointed nose to **pierce** the material to be cut. You can also use it to guide the cut.



When cutting film and paper, ensure the material to be cut is under **tension**.

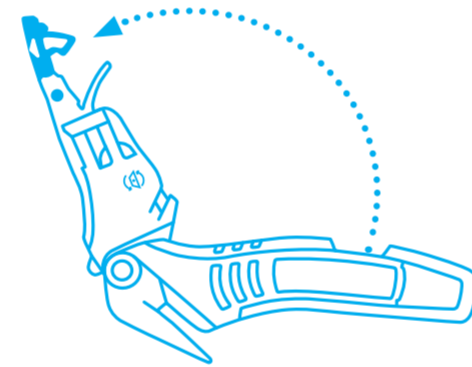


For best results, cut plastic strapping band **diagonally** (at a 45° angle).

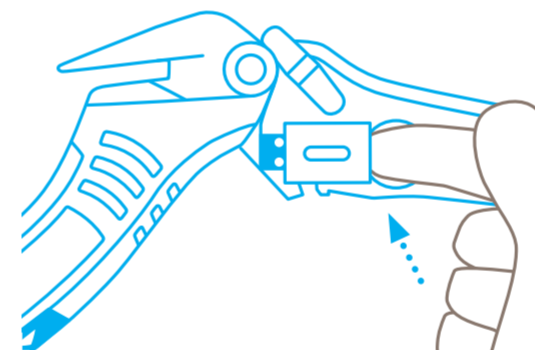


To use the **tape splitter**, turn the cutting tool around by 180 degrees.

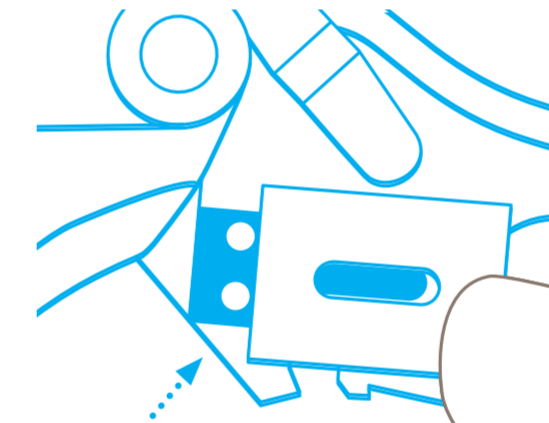
BLADE CHANGE



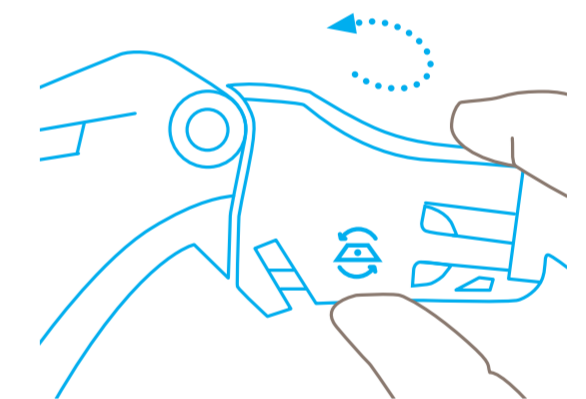
Fully open the blade carrier from the handle using the blade change button.



Place the thumb on the blade symbol and open up the blade cover. Remove the blade from the **side**. Turn or change the blade.

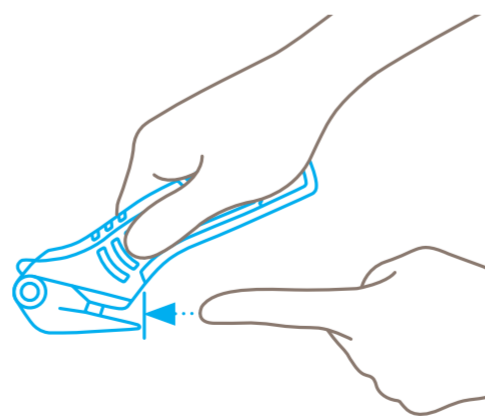


Then align the blade **to the left edge** and insert exactly onto the locating lugs.



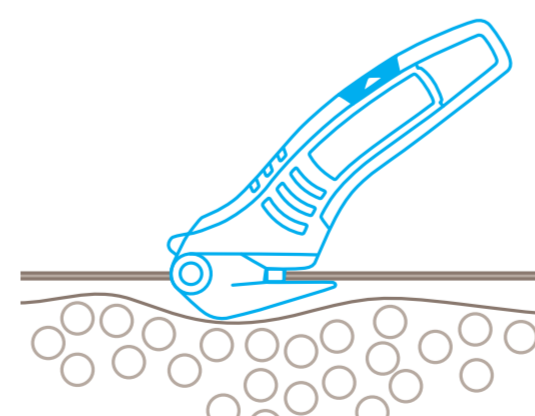
Close the blade cover and **fold the blade carrier back** into the handle letting the blade change button **audibly snap** into place.

PROTECTION OF USER



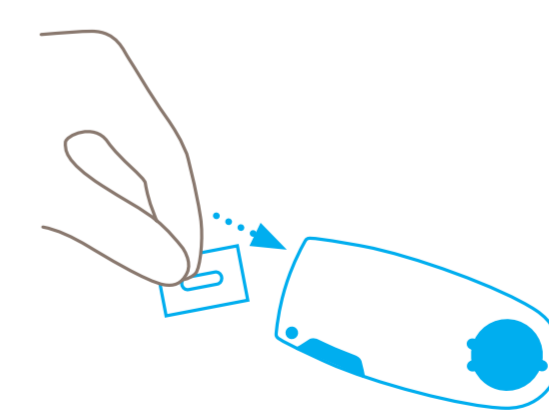
The concealed blade provides a maximum degree of **protection from cut injuries**.

PROTECTION OF GOODS

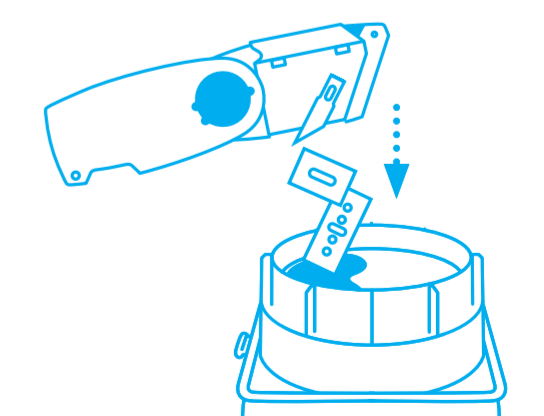


The concealed blade **will not get into contact with your goods** either.

DISPOSAL



Your **SAFEBOX** is the best place to store **used blades**.



When the **SAFEBOX** is full, **empty all contents** into your **USED BLADE CONTAINER**.

Please note: To ensure your product always functions flawlessly, regularly remove any impurities. For additional safety, we recommend wearing gloves.