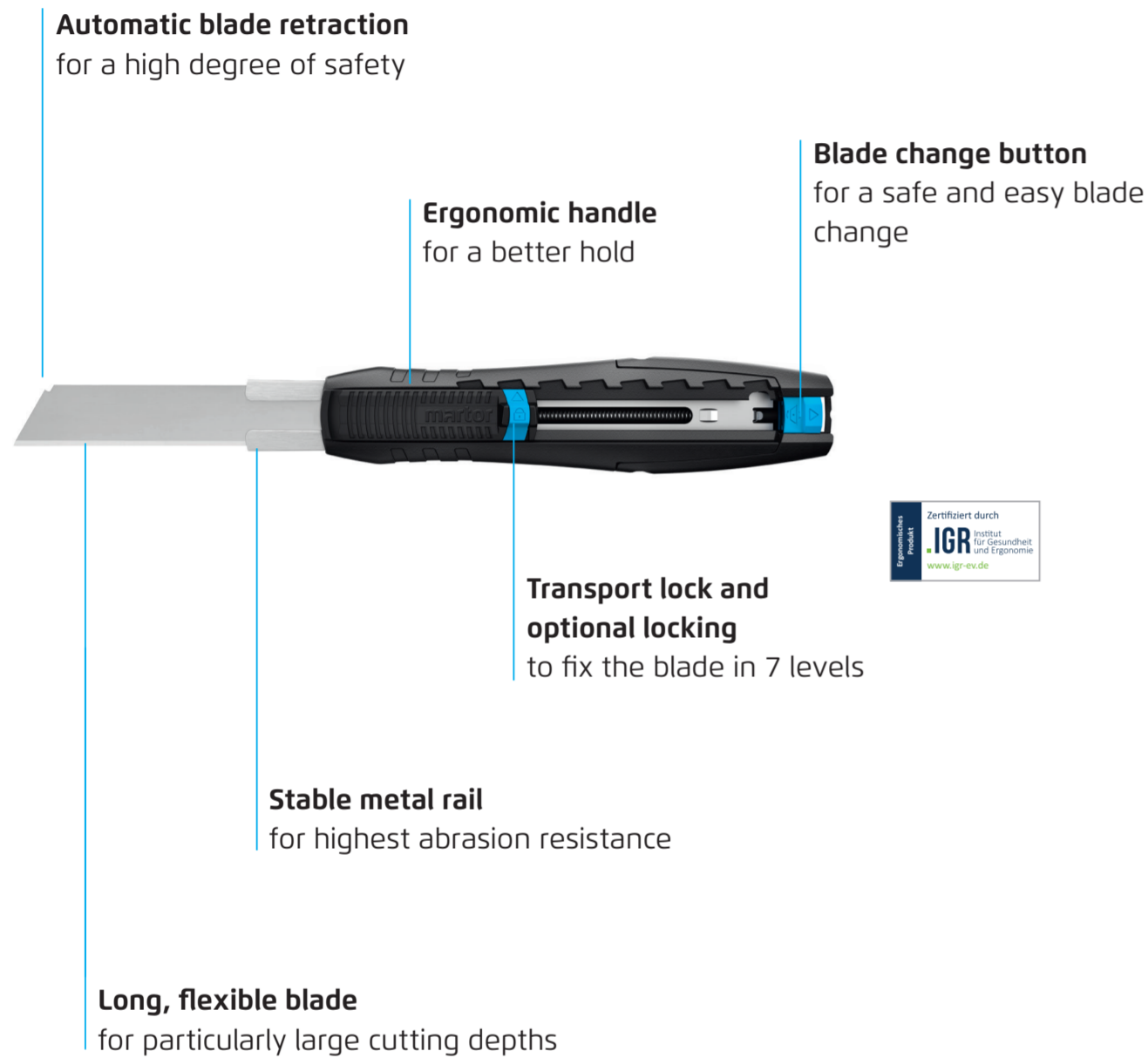


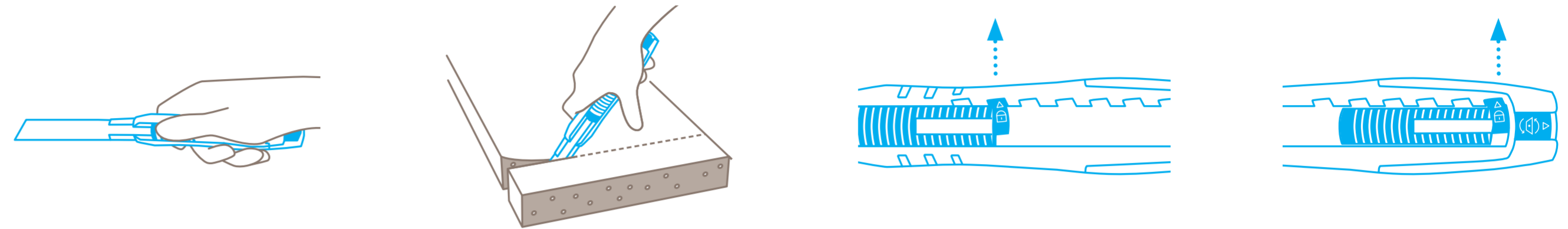
# SAFETY POSTER INSTRUCTIONS FOR THE SAFE HANDLING OF YOUR CUTTING TOOL



## SECUBASE 383



### USAGE



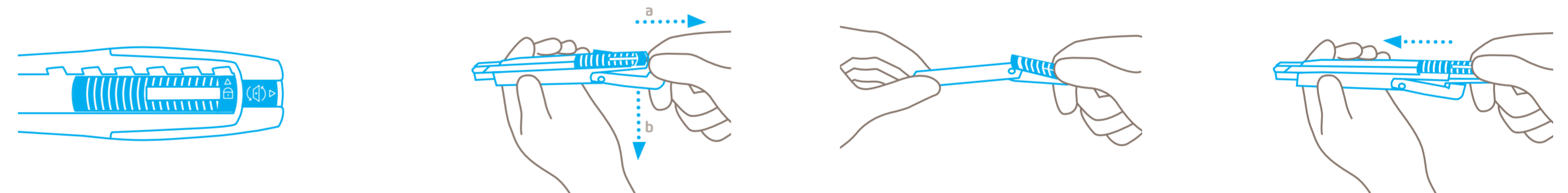
Move the slider **forward** to the required blade extension.

Pierce and remove **thumb from slider**. The blade retracts when cutting is complete. Always cut **away from the body**.

You also have the **option** of moving the slider forwards to the required cutting depth and **locking** it in position. Then **press the safety lock** into the required recess. To unlock, move in the opposite direction.

For safe storage, lock the slider in position 0. Also move the **safety lock upwards** in the direction of the arrow.

### BLADE CHANGE



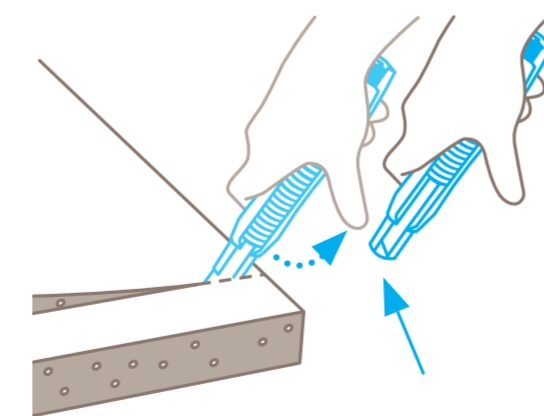
Only possible when **unlocked**. That means: Don't push the safety device upwards.

Pull the blade change button to the back as marked by the arrow (a), flip the end of the handle downwards (b) and **move the blade out of the handle** by using the slider.

Lift the slider, take out and change the blade, then position the new blade **exactly on the cam**. For left hand use, turn blade over. The two magnets fix the blade additionally.

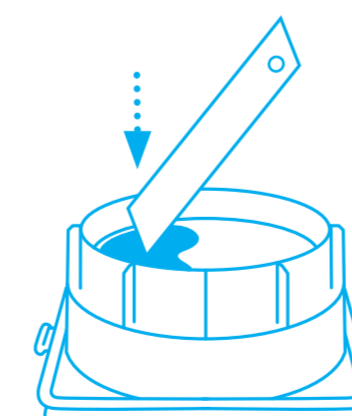
At last, slide the inner part with the blade **back into the handle** and flip the end of the handle upwards. Release and snap back the blade to ensure flawless functionality.

### PROTECTION OF USER



Following cutting, the blade immediately retracts into the handle. **CAUTION:** This requires that your hand is **not** blocking the slider and the slider is **not** locked.

### DISPOSAL



Your **USED BLADE CONTAINER** is the best place to store **used blades**.

**Please note:** To ensure your product always functions flawlessly, regularly remove any impurities. For additional safety, we recommend wearing gloves.