

SAFETY KNIFE SECUPRO 625

ORDER NOW!

Order No.	625016.02
Knife size (L x W x H)	154 x 22 x 59 mm
Weight knife	151.0 g
Basic material	Aluminium
Variations	625001.02 625016.02 625098.02



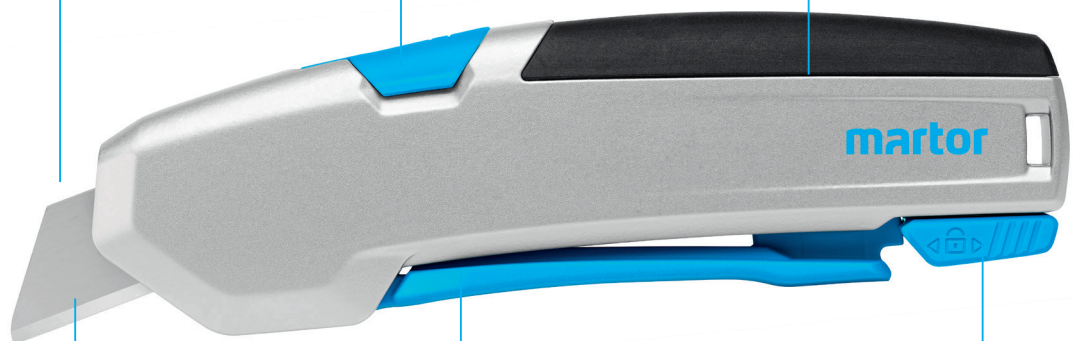
VERY
HIGH SAFETY

21 mm cutting depth
for all common cutting
materials

Fully automatic blade retraction
for a very high user protection

Blade change button
for simple and safe blade
change

Robust ergonomic handle
(incl. soft grip)
for the toughest challenges



Large smooth-running lever
for right and left handers

**2-cutting edge stainless
steel blade**
for a double period of use

Safety lock
for locking and
unlocking the lever

THE SAFER WAY TO CUT.

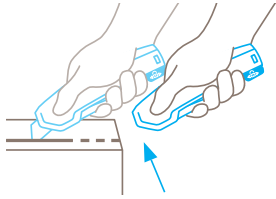
martor

MARTOR SAFETY KNIFE SECUPRO 625

SAFETY TECHNOLOGY



SECUPRO
= very high safety



Fully automatic blade retraction

The fully automatic blade retraction of the SECUPRO 625 guarantees a very high degree of safety from cut injuries. The blade withdraws into the handle immediately after leaving the material being cut. Even when the lever is still being squeezed.

TECHNICAL FEATURES



Tool-less blade change



Very abrasion resistant



Very ergonomic



Safety lock



2-cutting edge blade



Cutting depth



Rounded-tip trapezoid blade



Soft grip



For right and left handers



Stainless



Lanyard hole



Heavy-duty

EXAMPLES OF USE



MAIN CUTTING MATERIALS



Cardboard: up to 3-ply



Plastic strapping band



Slabbing material off a roll



Rubber



Leather



PVC



Carpet

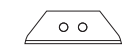


Textile, material

MOUNTABLE BLADES



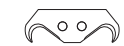
TRAPEZOID BLADE NO. 160099 **NO. 160099.70**
0.63 mm, rounded blade tips, deep-edged, stainless, 10 in safety dispenser



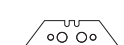
TRAPEZOID BLADE NO. 60099 **NO. 60099.70**
0.63 mm, rounded blade tips, deep-edged, 10 in safety dispenser



TRAPEZOID BLADE NO. 60095 **NO. 60095.70**
0.63 mm, rounded blade tips, deep-edged, 10 in transparent pack



HOOK BLADE NO. 98 **NO. 98.70**
0.63 mm, 10 in dispenser



TRAPEZOID BLADE NO. 99 **NO. 99.70**
0.63 mm, deep-edged, 10 in dispenser

PACKING INFORMATION

Packaging unit 1 in single unit box (10 knives in multipack)

Size Single unit box 160 x 26 x 64 mm

Weight single unit box 165.0 g

EAN Code single unit box 4002632803970

Size outer pack 133 x 133 x 163 mm

Weight outer pack 1760.0 g

EAN Code outer pack 4002632853975

Further mountable blades at www.martor.com.

For further information please contact us: **MARTOR UK LIMITED** | Unit 2, Monaco Works, Station Road | Kings Langley, Herts, WD4 8LQ | United Kingdom | T +44 1924 281333 | sales@martor.co.uk | www.martor.co.uk