

SAFETY POSTER INSTRUCTIONS FOR THE SAFE HANDLING OF YOUR CUTTING TOOL

martor

SECUMAX OPTICUT

Plastic material guide
to maintain downward pressure
on the material being cut

Ergonomic handle
for "push" cutting

Blade change button
for folding out the
metal foot

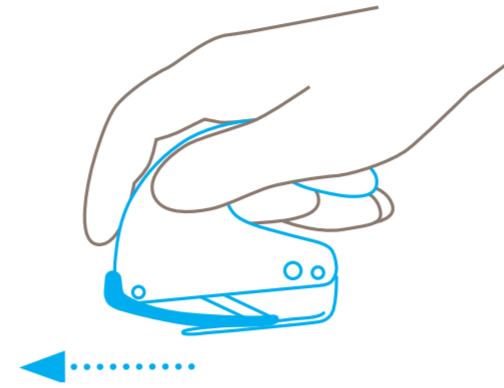


4-cutting edge blade
for longer durability

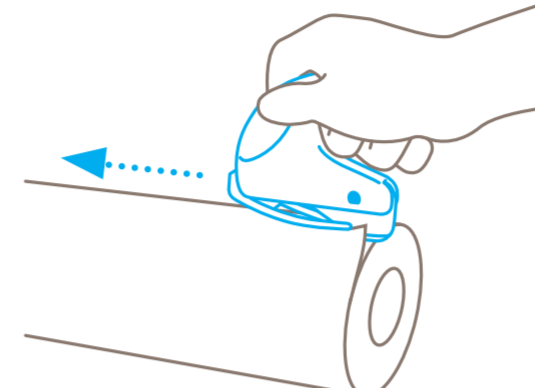
Metal foot
to glide across
surfaces

Concealed blade
for maximum protection
of users and goods

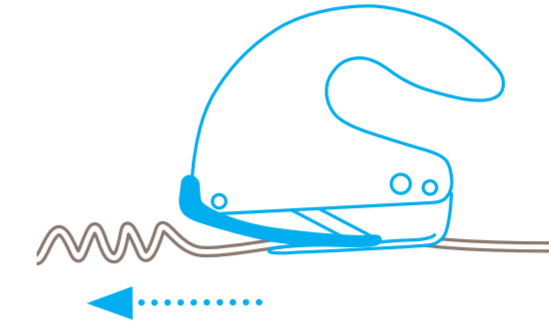
USAGE



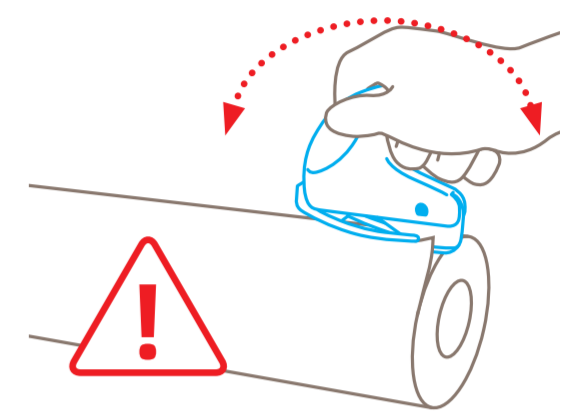
Cut by **pushing** and moving forwards.



Pierce film and paper sheets at the required position using the point of the metal foot.



Whether cutting foam or film, the bendable plastic material-guide reliably stops material jamming in front of the blade.



Only cut by sliding. Cutting by levering may break the metal foot.

BLADE CHANGE



Lift the catch and move downwards until its end covers the blade change button.



Press the catch and remove the metal foot from the handle. Replace or reverse the blade.

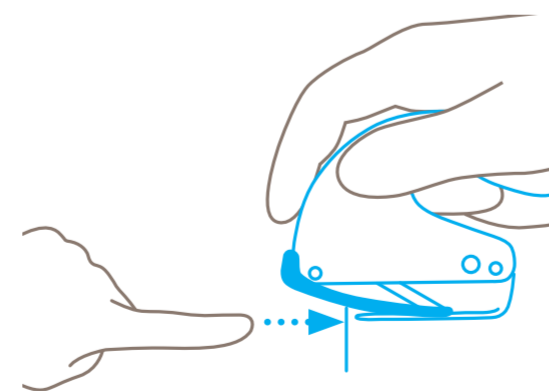


Press the catch again and insert the metal foot back into the handle until it **clicks**. Check that the foot is correctly inserted.



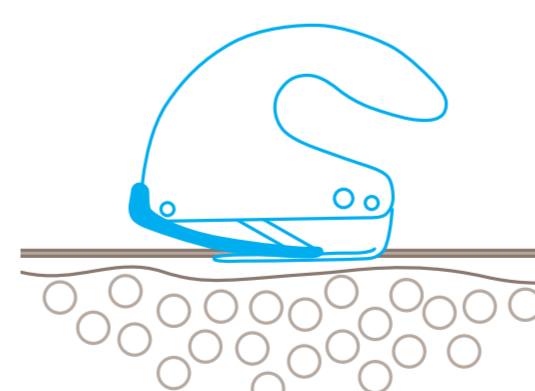
Move the catch back into the **starting position**.

PROTECTION OF USER



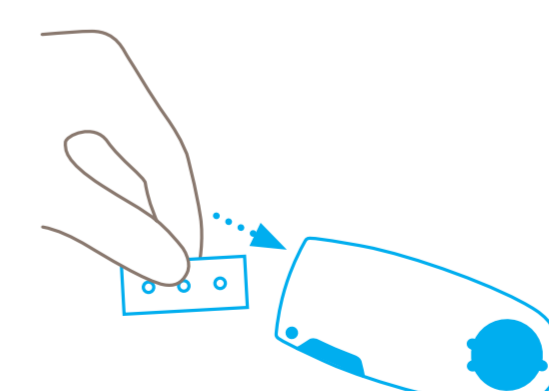
The concealed blade provides a maximum degree of **protection from cut injuries**.

PROTECTION OF GOODS

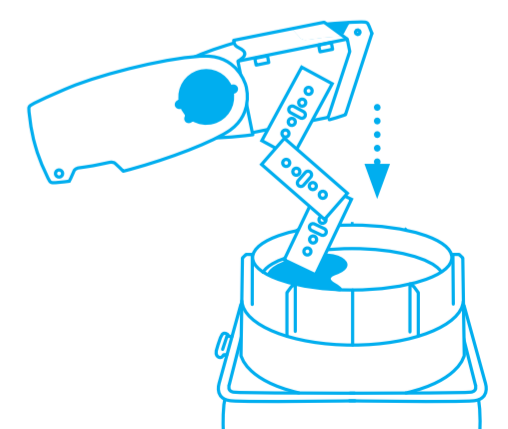


The concealed blade **will not get into contact with your goods** either.

DISPOSAL



Your SAFEBOX is the best place to store **used blades**.



When the SAFEBOX is full, **empty all contents** into your USED BLADE CONTAINER.

Please note: To ensure your product always functions flawlessly, regularly remove any impurities. For additional safety, we recommend wearing gloves.